

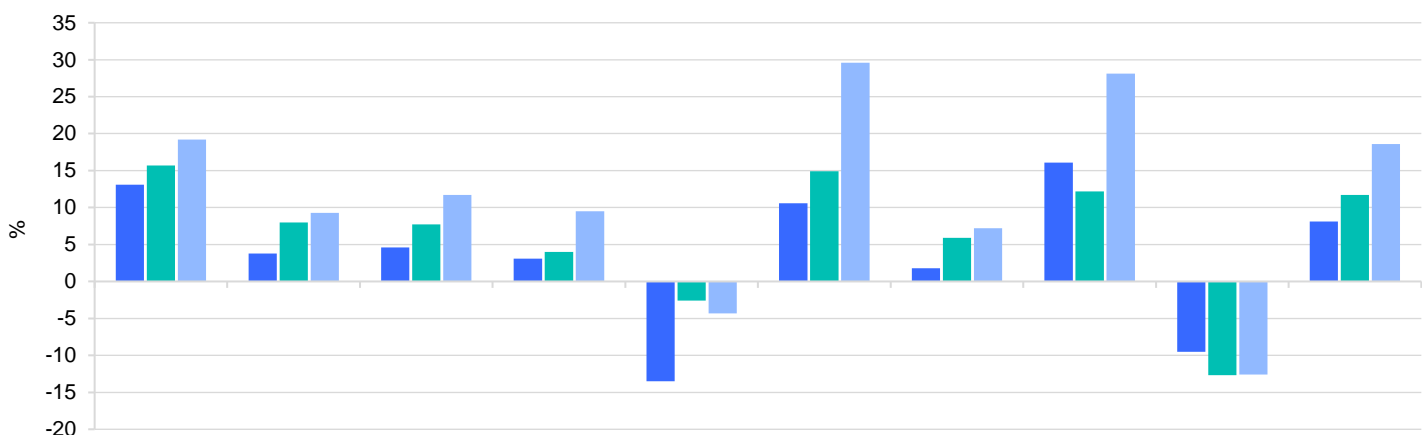
Franklin Global Multi-Asset Income Fund

Class I (acc) EUR • ISIN LU0909060898 • A sub-fund of Franklin Templeton Investment Funds (UCITS)

Management company: Franklin Templeton International Services S.à r.l., part of Franklin Templeton group.

This chart shows the fund's performance as the percentage loss or gain per year over the last 10 year(s) against its benchmark. It can help you to assess how the fund has been managed in the past and compare it to its benchmark. Where past performance is not shown there is insufficient data to provide a useful indication of past performance.

- Franklin Global Multi-Asset Income Fund Class I (acc) EUR
- Linked 50% Bloomberg Multiverse (Hedged in EUR) + 50% MSCI All Country World Index
- MSCI All Country World Index



	2014	2015	2016	2017	2018	2019	2020	2021	2022	2023
Franklin Global Multi-Asset Income Fund Class I (acc) EUR	13.1	3.8	4.6	3.1	-13.5	10.6	1.8	16.1	-9.5	8.1
Linked 50% Bloomberg Multiverse (Hedged in EUR) + 50% MSCI All Country World Index	15.7	8.0	7.7	4.0	-2.6	14.9	5.9	12.2	-12.7	11.7
MSCI All Country World Index	19.2	9.3	11.7	9.5	-4.3	29.6	7.2	28.1	-12.6	18.6

- **Past performance is not a reliable indicator of future performance. Markets could develop very differently in the future. It can help you to assess how the fund has been managed in the past.**
- Past performance is calculated in the currency of the present share class.
- The past performance shown here includes all the ongoing charges.
- The fund was launched on 26/04/2013 and the share class began issuing shares on 26/04/2013.
- Product performance is not tracking the index. Effective 1 July 2020, the Fund's benchmark is Linked 50% Bloomberg Multiverse (Hedged in EUR) + 50% MSCI All Country World Index. The benchmark performance shown is derived from a combination of the 40% MSCI World (Eur Based) Index, 55% Bloomberg Multiverse Index and 5% Bloomberg Commodity Index from 31 December 2002 to 30 June 2016, 55% Bloomberg Multiverse (100% Hedged Into EUR) Index, 40% MSCI All Country World Index and 5% Bloomberg Commodity Index from 1 July 2016 to 30 June 2020, and 50% MSCI All Country World Index and 50% Bloomberg Multiverse Index (hedged in EUR) thereafter.
- (Benchmark performance is provided for information and indicative purposes only.)